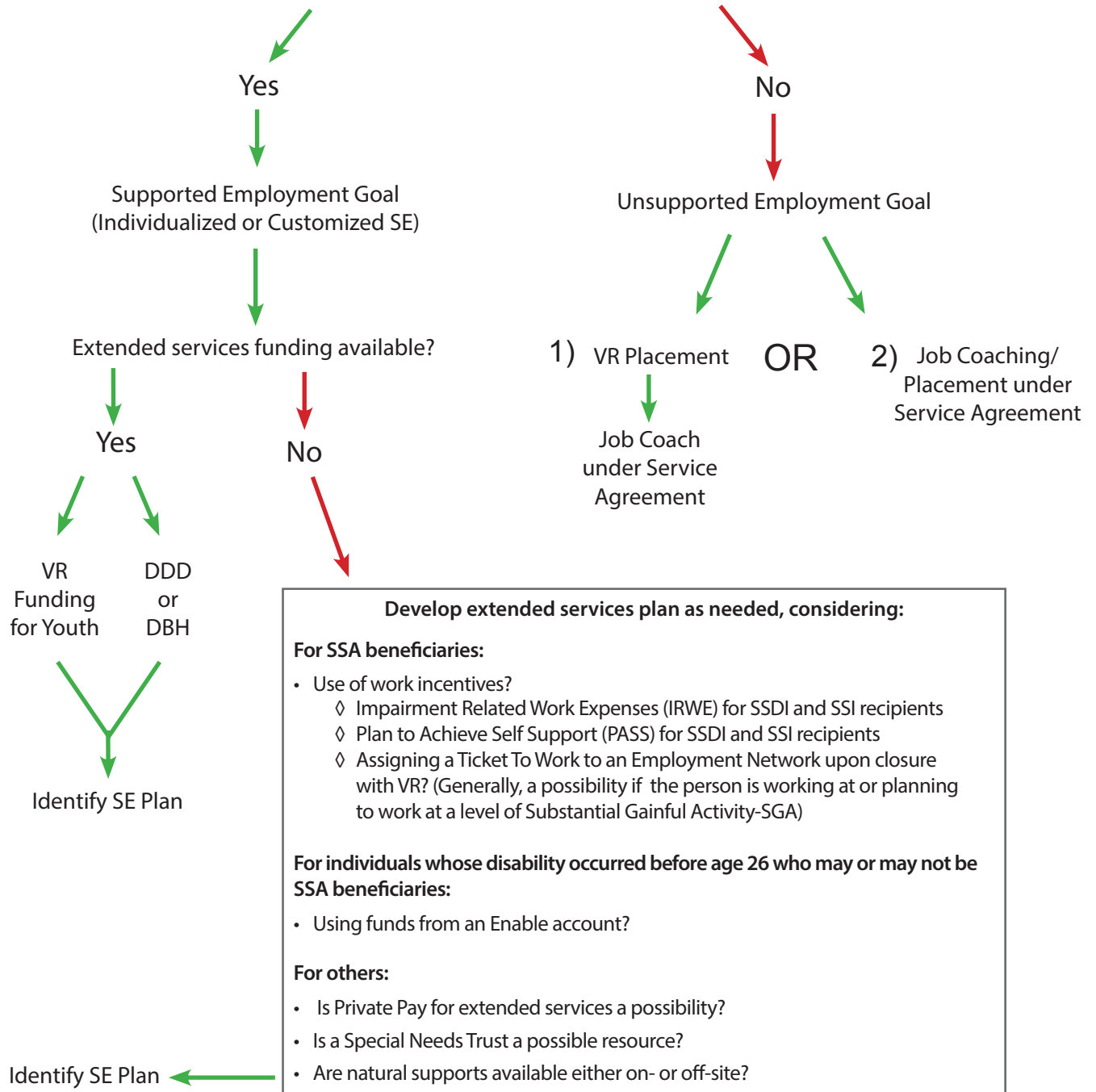


# Individualized Employment Plan (IPE)

## Considerations for People who are candidates for Supported Employment

(Supported Employment is defined in 34 CFR 361.5 (c) (53) as a means of securing competitive, integrated employment “for individuals with a most significant disability: 1) for whom competitive integrated employment has not historically occurred, or for whom competitive integrated employment has been interrupted or intermittent as a result of a significant disability; and, 3) who, because of the nature and severity of the disabilities, need intensive supported employment services and extended services after the transition from support provided by VR in order to perform the work.”)

**Is Supported Employment (SE) the only and/or best way to obtain an employment outcome?  
Use discussion questions to determine best plan options.**



DDD..... Division of Developmental Disabilities  
DBH..... Division of Behavioral Health