

Discovery Activity

Work Interests

* When you develop your Individualized Plan for Employment (IPE) you will select a specific job goal.

Have you previously explored your career interests?..... YES NO

If yes, what were the activities you completed to explore your interests?

- Completed interest assessment(s) online
- Completed a paper/pencil interest assessment(s)
- Explored careers by looking at occupations online or in books
- Have watched someone work in an occupation I am interested in working
- Talked to someone who is working in the occupation that I have an interest
- Other

If you completed any of the above activities, what were the results?

CAREERS/JOBS

The next page includes a diagram of 6 career field related to general work interests:

- Health Sciences
- Human Services & Education
- Business, Marketing, and Management
- Agriculture, Food, and Natural Resources
- Communication & Information Systems
- Skilled & Technical Sciences

Each career field has a Career Cluster with a few sample occupations. Complete the activity to identify a job that aligns with your interests.

List the Career Fields or Cluster you are interested in exploring further:

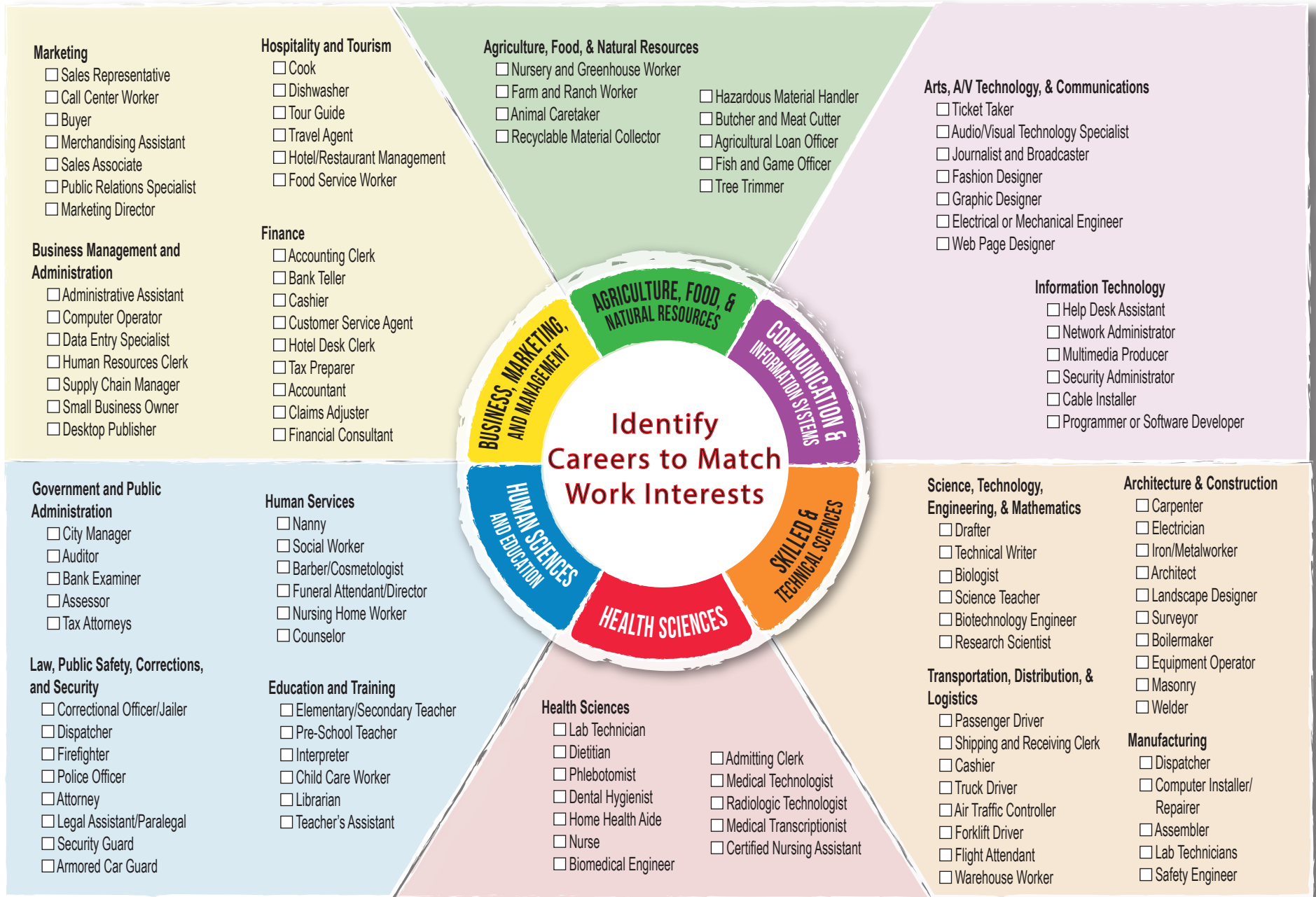
List any occupations you would like to explore:

To find additional occupations for each career field, visit:
<http://www.education.ne.gov/nce/CareerClustersResources.html>

Career Clusters

* Review the list of jobs and check the box by your job interest.

It is not important if you have the skills or training for the specific job. You are just indicating if you have an interest in that type of work.



* VR Staff required data fields

Nebraska Career Education Model recreated for career planning purposes for Nebraska VR.